



Submission to The Proposed Amendment (2012) To The Algonquin Provincial Park Management Plan

Submitted by the Algonquin Backcountry Recreationalists

September 11th, 2012

The Algonquin Backcountry Recreationalists are submitting the following concerns based on the information contained in three documents ...

- 1) Proposed Algonquin Provincial Park Management Plan Amendment, July 2012
- 2) Figure 3b - Proposed Amendment to Zoning Summary Map - PDF
- 3) Table 1: Proposed Protection Zoning by Waterbody Name, July 2012
(provided on August 3rd by Jim M. Murphy, Park Planner at the ABR's request)

On March 3rd, 2010 the ABR submitted the 13-page document "Comments On Background Information For A proposed Algonquin Provincial Park Management Plan Amendment". Upon cross-checking that document's concerns with the above three documents, the ABR observed a number of unaddressed concerns...

*"**Comment #3.** (page 4) The Lost Coin Lake Cabin is located on Lost Coin Lake. It is accessible from the park boundary by hiking or biking along a 7km trail. The cabin is one of numerous such established backcountry camping values in the park. Activities of people staying there include viewing and exploring the area around the lake. The ABR believes that a 120 meter protective setback zone should be applied around Lost Coin Lake."*

The Algonquin Park website describes the rentable cabin's lake as having Brook Trout fishing and great hiking and wildlife viewing opportunities on old roads in the vicinity.
<http://www.algonquinpark.on.ca/visit/camping/lost-coin-lake-ranger-cabin.php> .

Concern 1: The ABR believes that Lost Cabin Lake deserves a 120 meter setback zoning, given the brook trout fishing and the rented cabin.

“Comment #4. (page 5) Pretty Lake is located off the Lake Traverse Road and has a single regular maintenance campsite. The campsite and its lake are definitely backcountry camping values. Activities of people staying there include viewing and exploring the area around the lake. The ABR believes that a 120 meter protective setback zone should be applied around Pretty Lake.”

Concern 2: The existing road nearest to the shoreline may be at odds with a complete 120 meter protective setback zone. However, a 120 meter protective setback zone could be applied to the balance of the Pretty Lake shoreline.

“**Comment #6.** (page 7) Little Norway Lake is located off the Basin Lake Road south of the Hydro Line and has a single low maintenance campsite. The campsite and its lake are considered backcountry camping values. Activities of people staying there include viewing and exploring the area around the lake. The ABR believes that a 60 meter protective setback zone should be applied around Little Norway Lake.”

Concern 3: The existing road nearest to the shoreline may be at odds with a complete 60 meter protective setback zone. However, a 60 meter protective setback zone could be applied to the balance of the Little Norway Lake shoreline.

“**Comment #11** (page 13) A number of lakes in the Western Uplands area have backcountry canoe campsites on them, but have only been assigned minimal zoning setbacks. The ABR believes that, in order to maintain consistent wilderness-like aesthetics, these Western Uplands canoe campsite lakes warrant 120 meter protective setback zones. The affected lakes include ... West Harry Lake, Mossy Lake, Tonakela Lake, Drummer Lake, Little Drummer Lake and Namakootchie Lake.”

Concern 4: The ABR repeats its position that those lakes with just canoe route campsites should get the same 120 meter setback zoning, as those lakes with campsites on the Western Uplands Backpacking Trail.

In its effort to better analyze information contained within the originally referenced three documents, the ABR has divided the Zoning Summary Map into 10 “sub-maps”, upon which it has overlaid the proposed water body protection zone setbacks in specific legible text characters.

On these sub-maps, the ABR has also included shaded areas of concern with accompanying numbered comments.

The following pages contain ten sub-maps along with pertinent comments and concerns.

The index-map of the following 10 sub-maps is located at the end of this submission.

The comments merely indicate what appear to be simple omissions in documentation.

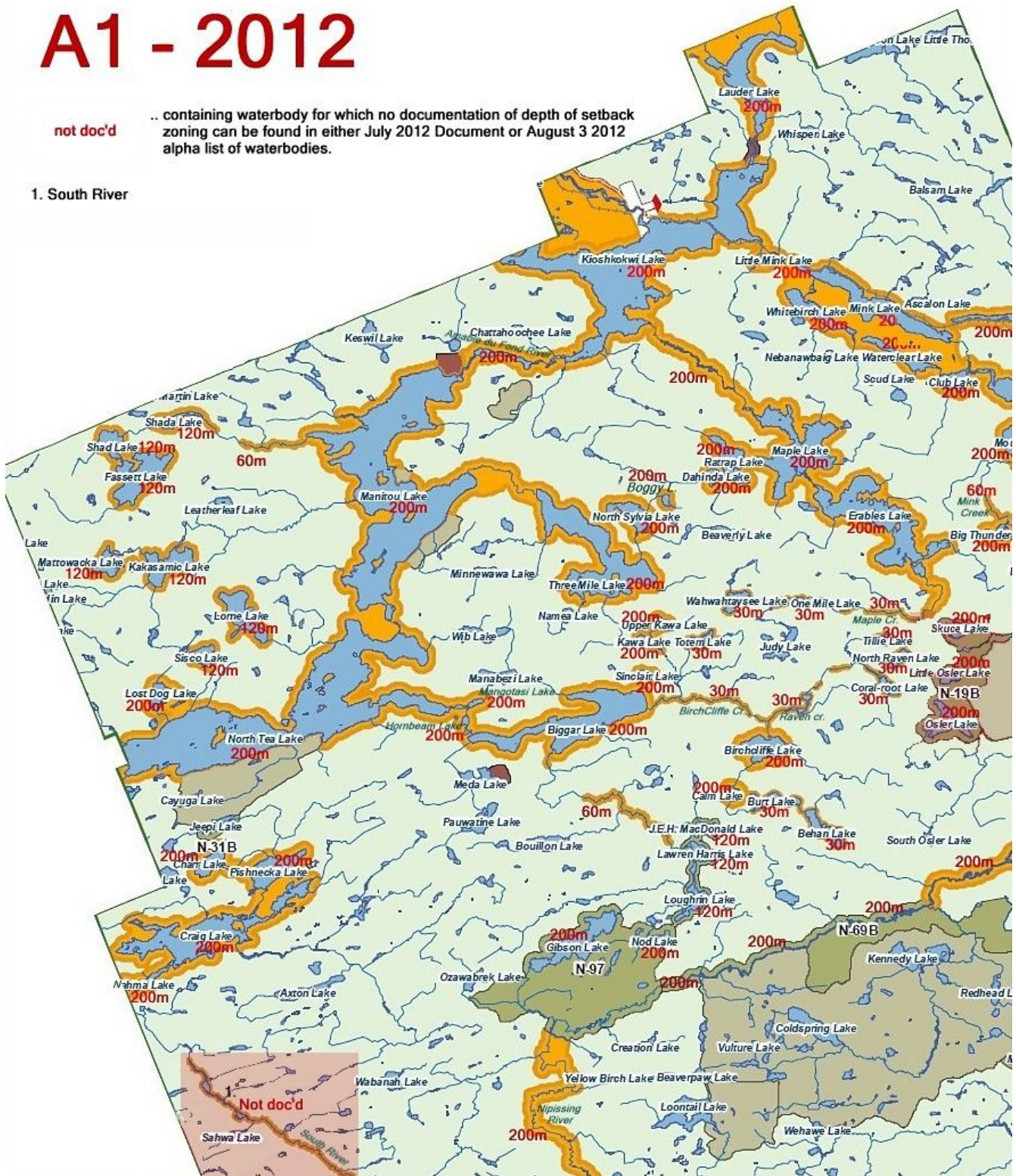
However, other instances are highlighted and numbered as serious concerns that the ABR has with the information's particular documentation or lack thereof.

A1 - 2012

not doc'd

.. containing waterbody for which no documentation of depth of setback zoning can be found in either July 2012 Document or August 3 2012 alpha list of waterbodies.

1. South River

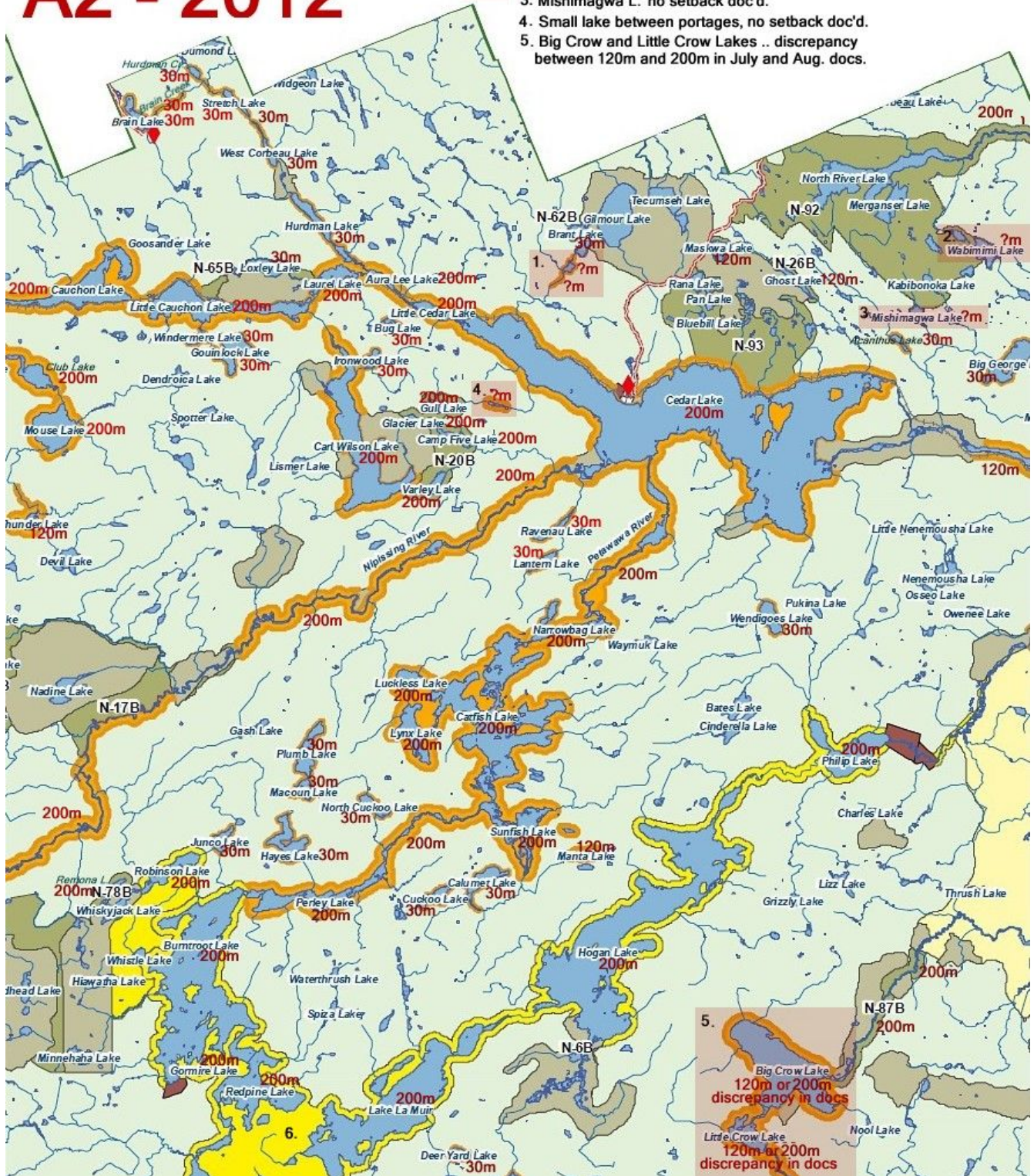


Map A1 – 1. South River .. while it is illustrated on the Figure 3b Map as having a “shallow setback zoning”, it is not described in either of the other two documents. (also on Map B1)

A2 - 2012

#'s

1. Un-named lake and creek section SW of Brant Lake, no setback doc'd.
2. North side of Wabimimi L., no setback doc'd.
3. Mishimagwa L. no setback doc'd.
4. Small lake between portages, no setback doc'd.
5. Big Crow and Little Crow Lakes .. discrepancy between 120m and 200m in July and Aug. docs.



Map A2 – 1. Un-named lake and creek section SW of Brant Lake .. while they are illustrated on the Figure 3b Map as having a “shallow setback zoning”, they are not described in either of the other two documents.

Map A2 – 2. North side of Wabimimi Lake .. despite being within N-92, the lake's north side has no setback zoning described in either of the other two documents..

Map A2 – 3. Mishimagwa Lake .. despite being within N-92, the lake's “outer” sides have no setback zoning described in either of the other two documents.

Map A2 – 4. Un-named Lake.. a small lake between portages, it has no setback zoning described in either of the other two documents.

Map A2 – 5. Big Crow and Little Crow Lake.. there's a discrepancy in documented setback zoning. Page 11 of July 2012 document reads 120 meters, while the Table 1 listing reads 200 meters.

Concern 5: The ABR believes that since setback zonings on the Crow River are 200 meters, that both lakes should have the 200 meter setback zoning, as documented in the later Table 1.

Map A3 – 1. Section of Bissett Creek .. while it is illustrated on the Figure 3b Map as having a “shallow setback zoning”, the zoning's depth is not described in either of the other two documents.

Map A3 – 2. Radiant Lake .. there's a discrepancy in documented setback zoning. Page 11 of July 2012 document reads 120 meters, while the Table 1 listing reads 200 meters.

Map A3 – 3. Lake Travers .. there's a discrepancy in documented setback zoning. Page 11 of July 2012 document reads 120 meters, while the Table 1 listing reads 200 meters.

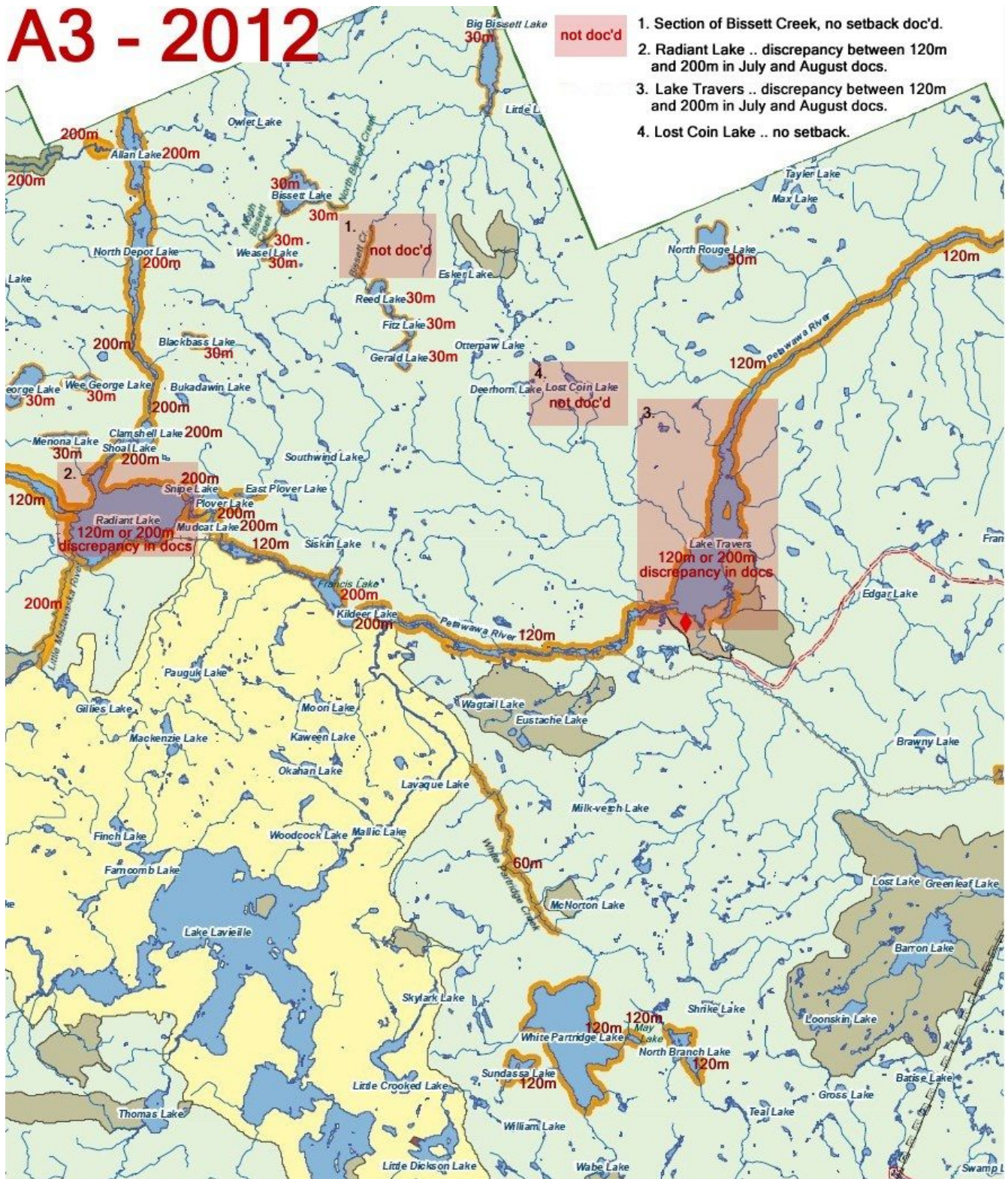
Concern 6: Given that setback zonings for many lakes along the Petawawa River are documented on the latest listing as 200 meters, the ABR maintains that both Radiant Lake and Lake Travers should also have setback zonings of 200 meters.

Concern 7: In addition, the ABR maintains that the entire Petawawa River itself should have a setback zoning of 200 meters along its entire length.

Map A3 – 4. Lost Coin Lake .. it has no setback zoning described in any of the documents.

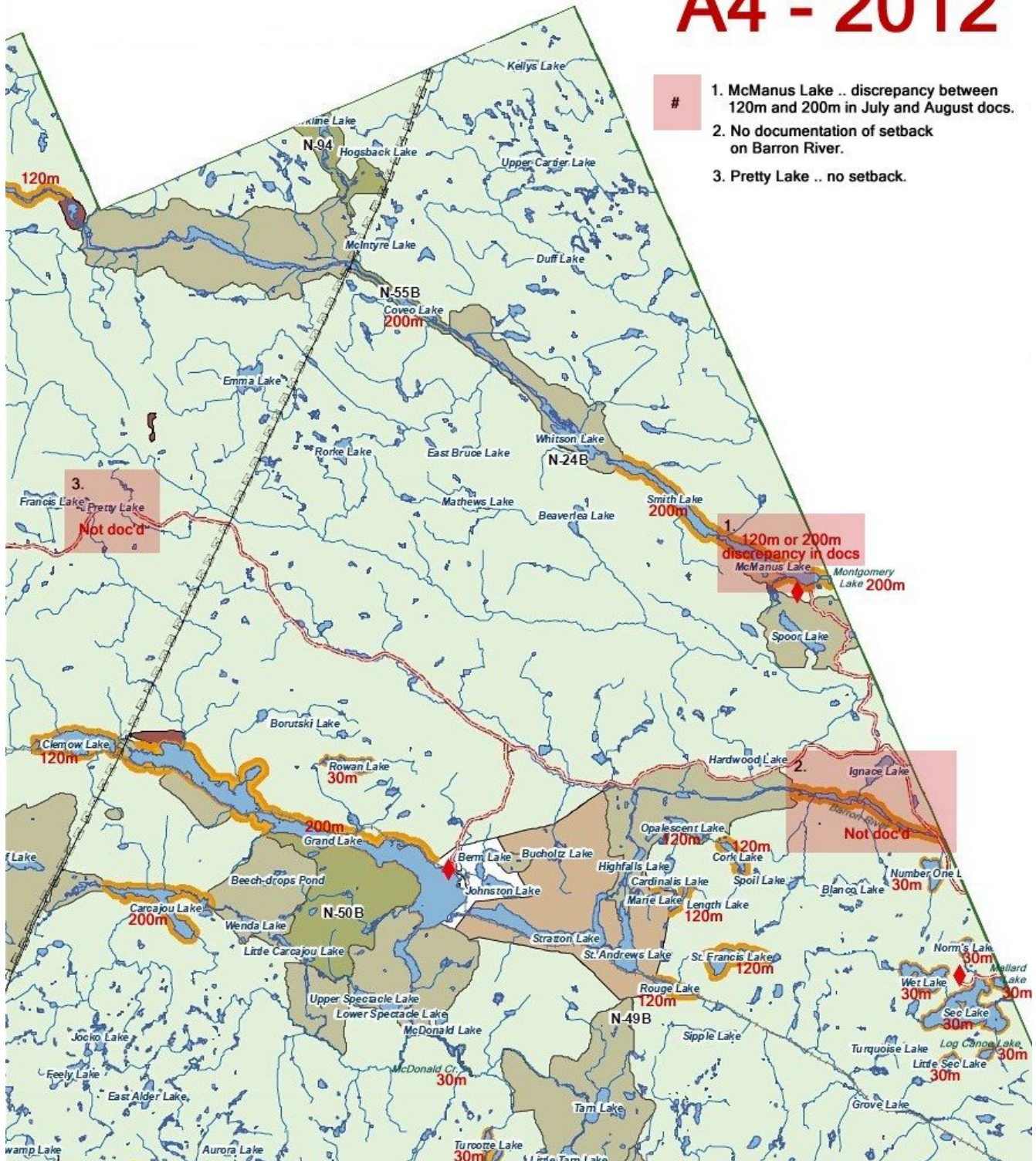
Concern 8: The ABR maintains that Lost Cabin Lake deserves a 120 meter setback zoning, given the brook trout fishing and the rented cabin. (described in more detail on page 1 as Concern 1 of this submission)

A3 - 2012



- 1. Section of Bissett Creek, no setback doc'd.
- 2. Radiant Lake .. discrepancy between 120m and 200m in July and August docs.
- 3. Lake Travers .. discrepancy between 120m and 200m in July and August docs.
- 4. Lost Coin Lake .. no setback.

A4 - 2012



Map A4 – 1. McManus Lake.. there's a discrepancy in documented setback zoning. Page 11 of July 2012 document reads 120 meters, while the Table 1 listing reads 200 meters.

Concern 9: Setback zonings for many lakes along the Petawawa River are on the latest listing as 200 meters, The ABR maintains McManus Lake should also be 200 meters.

Map A4 – 2. Barron River .. while it is illustrated on the Figure 3b Map as having a setback zoning, the zoning's depth is not described in any of the documents.

Concern 10: The ABR maintains that the Barron River's setback zoning should be documented as 200 meters.

Map A4 – 3. Pretty Lake .. it has no setback zoning described in any of the documents.

Concern 11: The ABR maintains that Pretty Lake deserves a 120 meter setback zoning. (described in more detail on page 2 as Concern 2 of this submission)

Map B1 – 1. South River .. while it is illustrated on the Figure 3b Map as having a “shallow setback zoning”, the zoning's depth is not described in either of the other two documents. (also on Map B1)

Map B1 – 2. Susan Lake .. While this lake has a setback zoning illustrated on the Figure 3b Map, its setback zoning depth is not described in either of the other two documents.

Concern 12: Since Susan Lake has campsites associated with the Western Uplands Backpacking Trail , the ABR maintains it should have a 120 meter setback zoning.

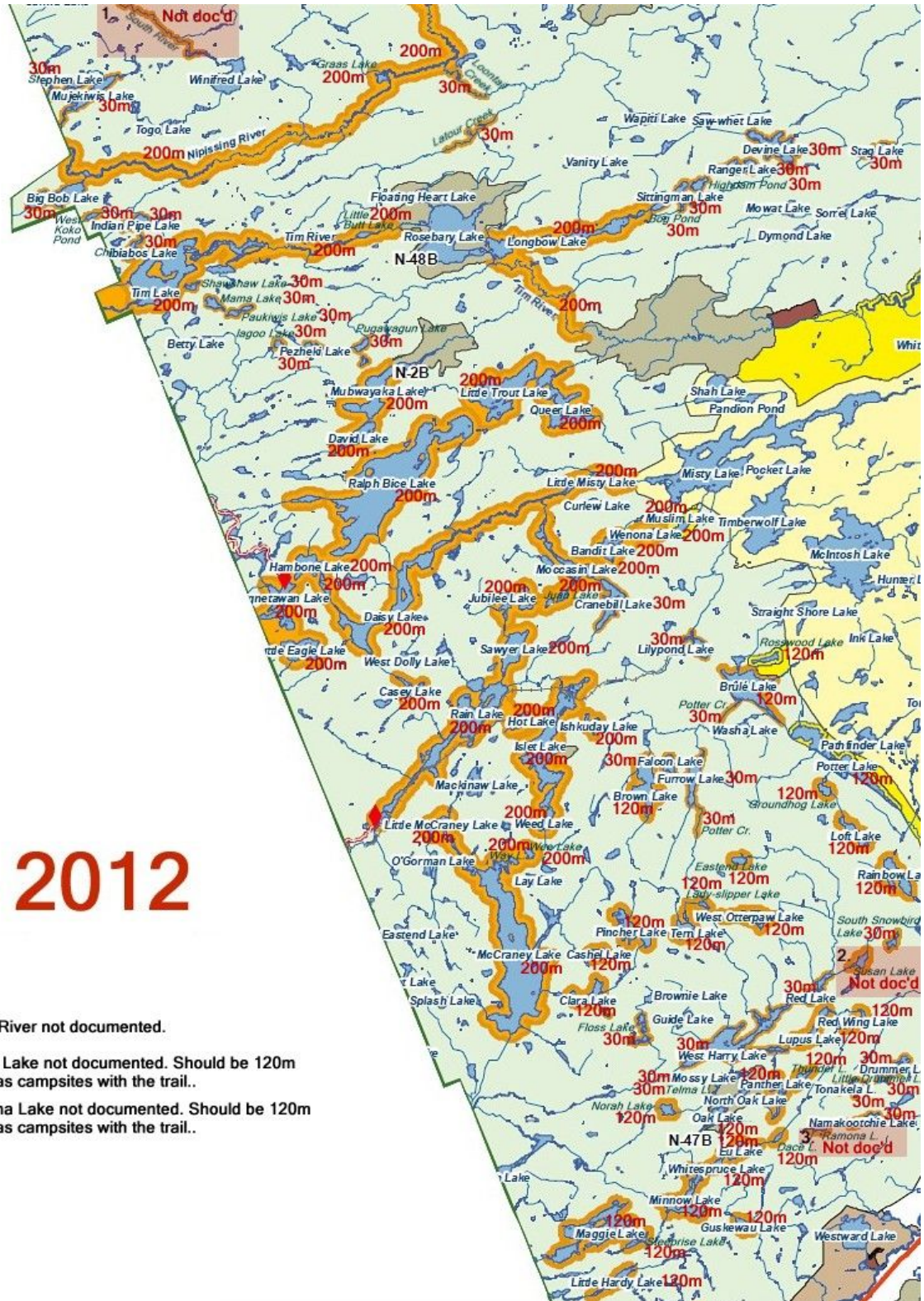
Map B1 – 3. Ramona Lake .. While this lake has a setback zoning illustrated on the Figure 3b Map, its setback zoning depth is not described in either of the other two documents.

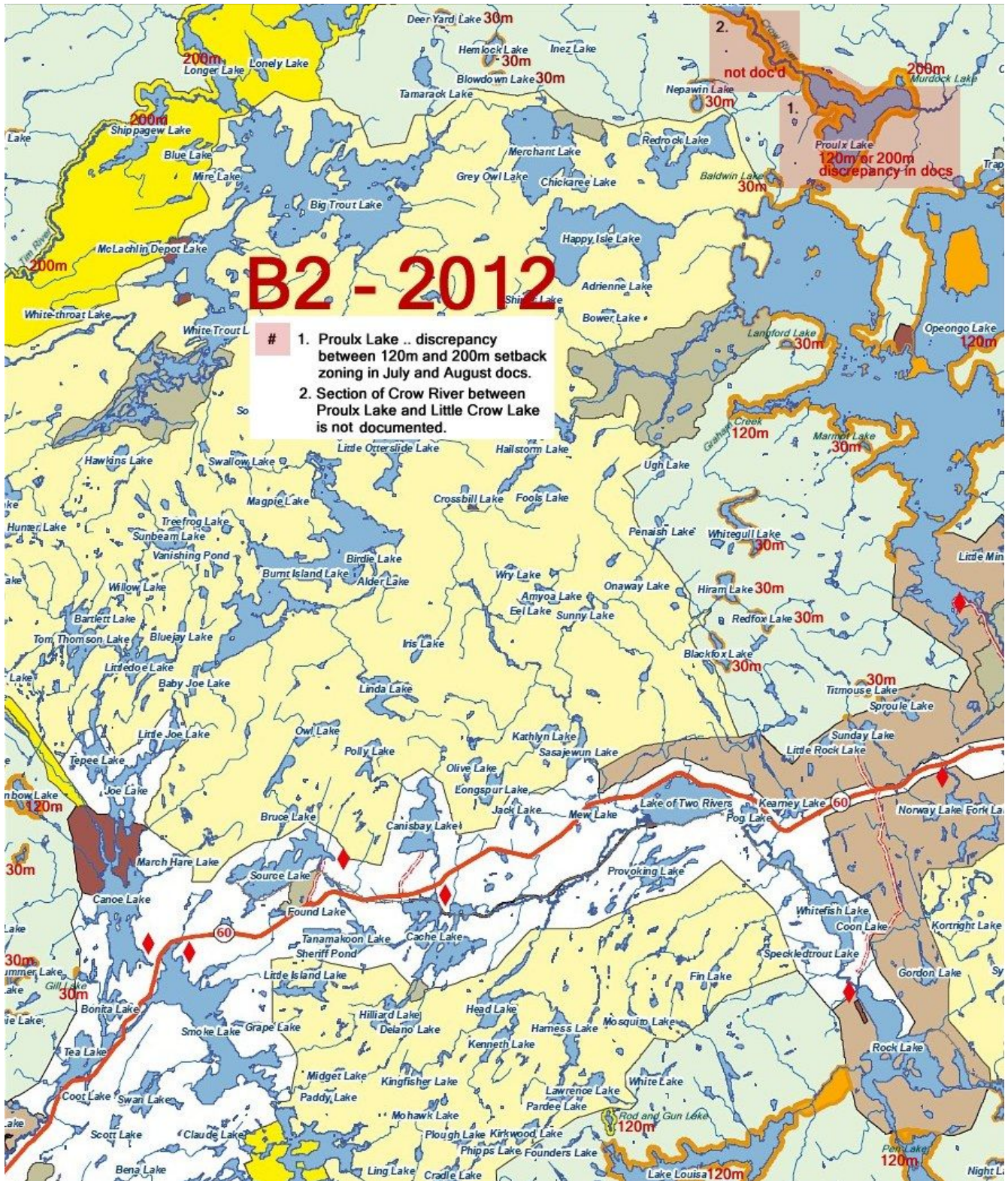
Concern 13: Since Ramona Lake has campsites associated with the Western Uplands Backpacking Trail , the ABR maintains it should have a 120 meter setback zoning.

B1 - 2012

#'s

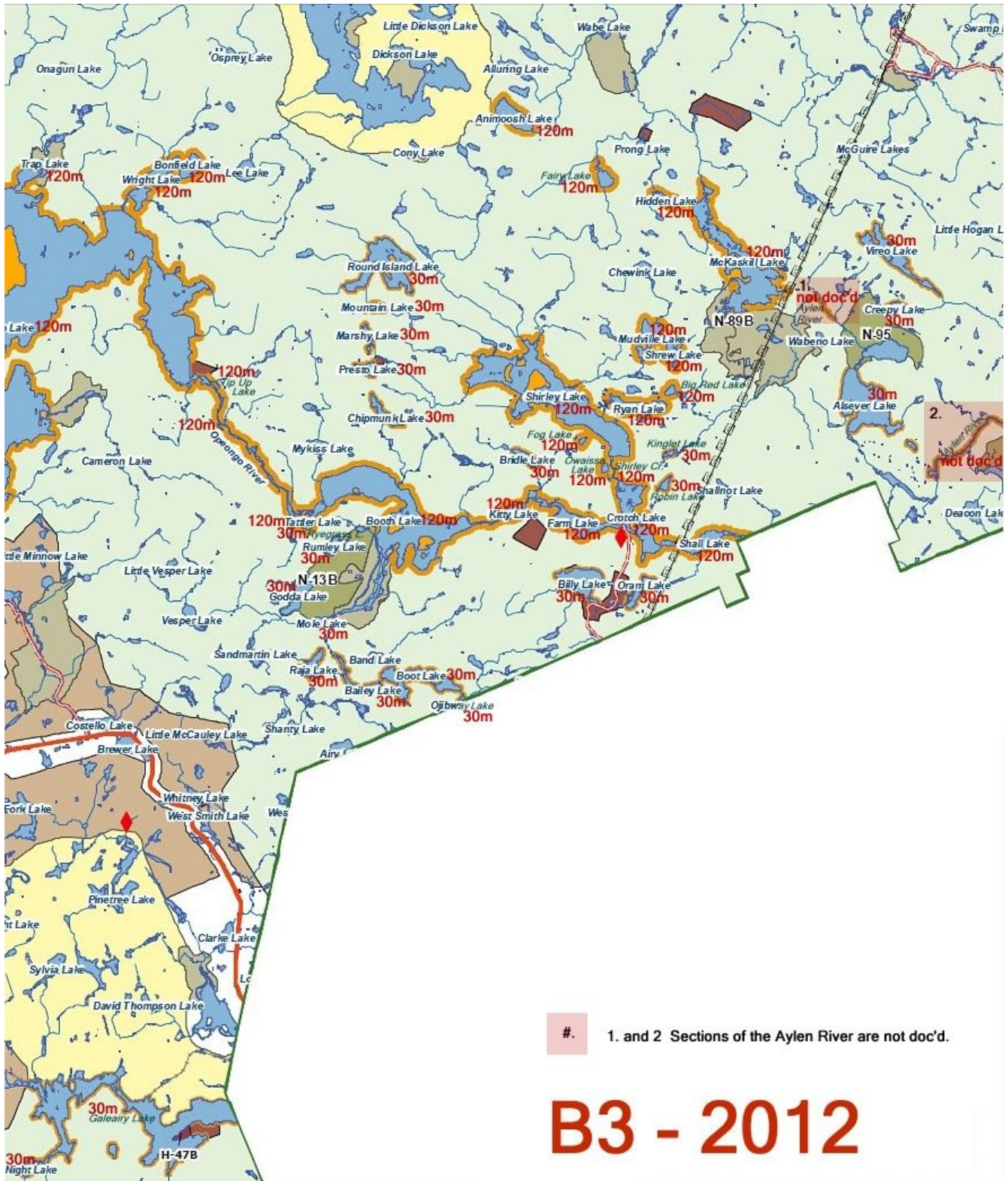
1. South River not documented.
2. Susan Lake not documented. Should be 120m as it has campsites with the trail..
3. Ramona Lake not documented. Should be 120m as it has campsites with the trail..



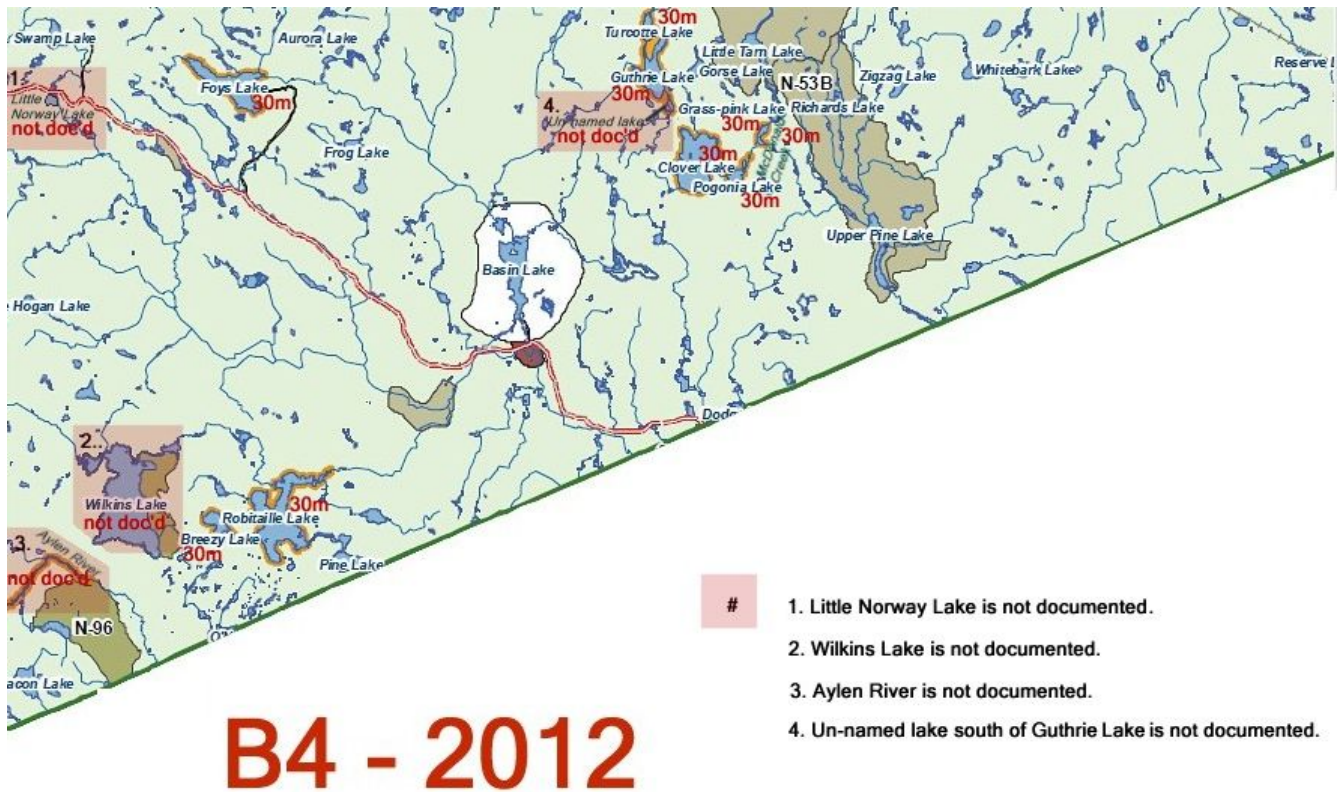


Map B2 – 1. Proulx Lake.. there's a discrepancy in documented setback zoning. Page 11 of July 2012 document reads 120 meters, while the Table 1 listing reads 200 meters.

Concern 14: The ABR maintains that Proulx Lake should have a setback zoning of 200 meters documented.



Map B3 – 1 and 2. Aylen River .. two sections of the river have setback zonings shown on the map, but the zoning's depths are not described in either of the other two documents.



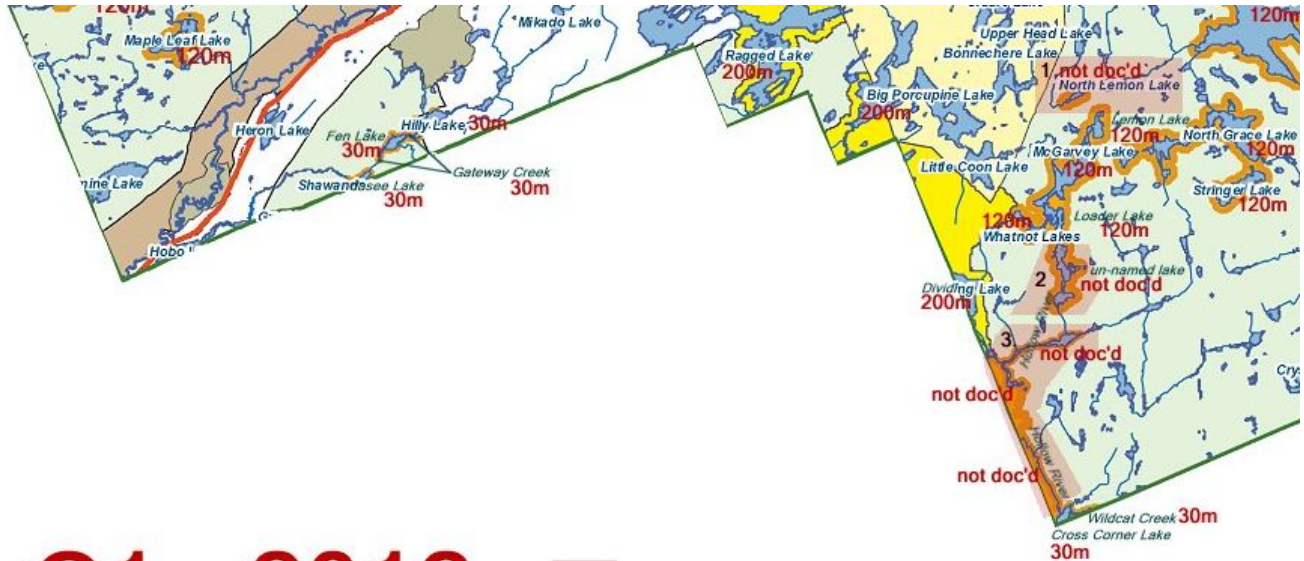
Map B4 – 1. Little Norway Lake .. it has no setback zoning described in any of the documents.

Concern 15: The ABR maintains that Little Norway Lake deserves a 60 meter setback zoning. (described in more detail on page 2 as Concern 3 of this submission)

Map B4 – 2. Wilkins Lake - while it is illustrated on the Figure 3b Map as having a setback zoning, the zoning's depth is not described in any of the documents.

Map B4 – 3. Aylen River – while a section of the river is illustrated on the Figure 3b Map as having a setback zoning, the zoning's depth is not described in any of the documents. This is an extension of Map B3 (1 and 2).

Map B4 – 4. Un-named lake – while an un-named lake south of Guthrie Lake is illustrated on the Figure 3b Map as having a setback zoning, the zoning's depth is not described in any of the documents.



C1 - 2012

- # 1. North Lemon Lake not documented.
- 2. Un-named lake on Hollow River, not documented.
- 3. Hollow River not documented.

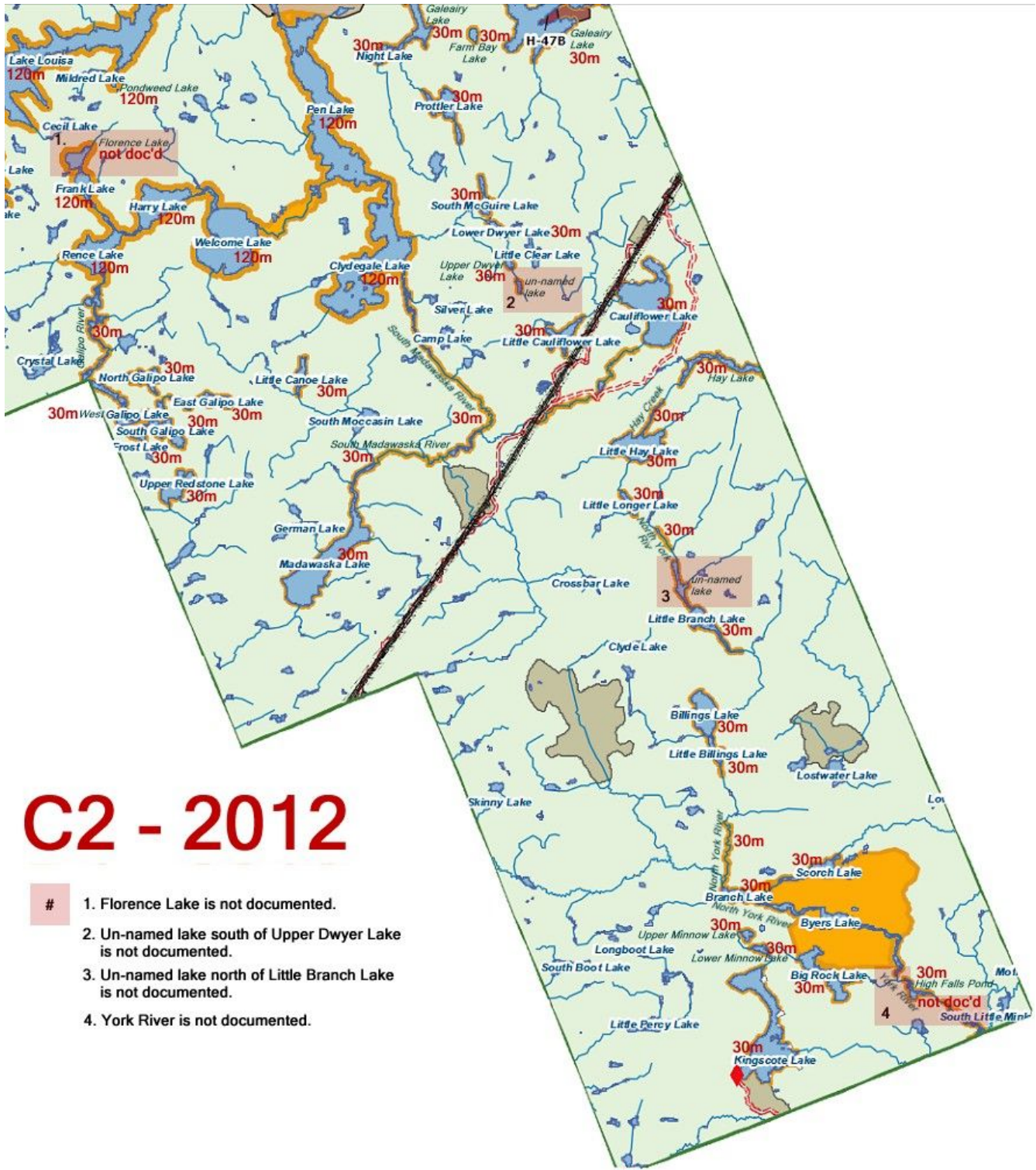
Map C1 – 1. North Lemon Lake - while it is illustrated on the Figure 3b Map as having a setback zoning, the zoning's depth is not described in any of the documents.

Concern 16: The ABR maintains that North Lemon Lake deserves a 120 meter setback zoning, in keeping with the rest of the canoe route lakes it is joined to.

Map C1 – 2. Un-named lake – while an un-named lake south of Loader Lake has a setback zoning illustrated on the Figure 3b Map, the zoning's depth is not described in any of the documents.

Concern 17: The ABR maintains that this lake (which has two campsites) deserves a 120 meter setback zoning, in keeping with the rest of the canoe route lakes it is joined to.

Map C1 – 3. Hollow River – while it is illustrated on the Figure 3b Map as having a setback zoning, the zoning's depth is not described in any of the documents.



Map C2 – 1. Florence Lake – while it is illustrated on the Figure 3b Map as having a setback zoning, the zoning's depth is not described in any of the documents.

Concern 18: The ABR maintains that Florence Lake deserves a 120 meter setback zoning, in keeping with the rest of the canoe route lakes it is joined to.

Map C2 – 2. Un-named lake - an un-named lake south of Upper Dwyer Lake has a setback zoning shown on the Figure 3b Map, but the zoning's depth is not described in any of the documents.

Map C2 – 3. Un-named lake - an un-named lake north of Little branch Lake has a setback zoning shown on the Figure 3b Map, but the zoning's depth is not described in any of the documents.

Map C2 – 4. York River – It has a setback zoning shown on the Figure 3b Map, but the zoning's depth is not described in any of the documents.

Concern 19: The ABR also has a concern that three lower-traffic access point lakes only have 30 meter setback zonings. The ABR maintains that these access point lakes should have no less than 120 meter setback zonings in recognition of their future significance as “first impressions”. These access point lakes are ... Brain Lake, Sec Lake, and Kingscote Lake.

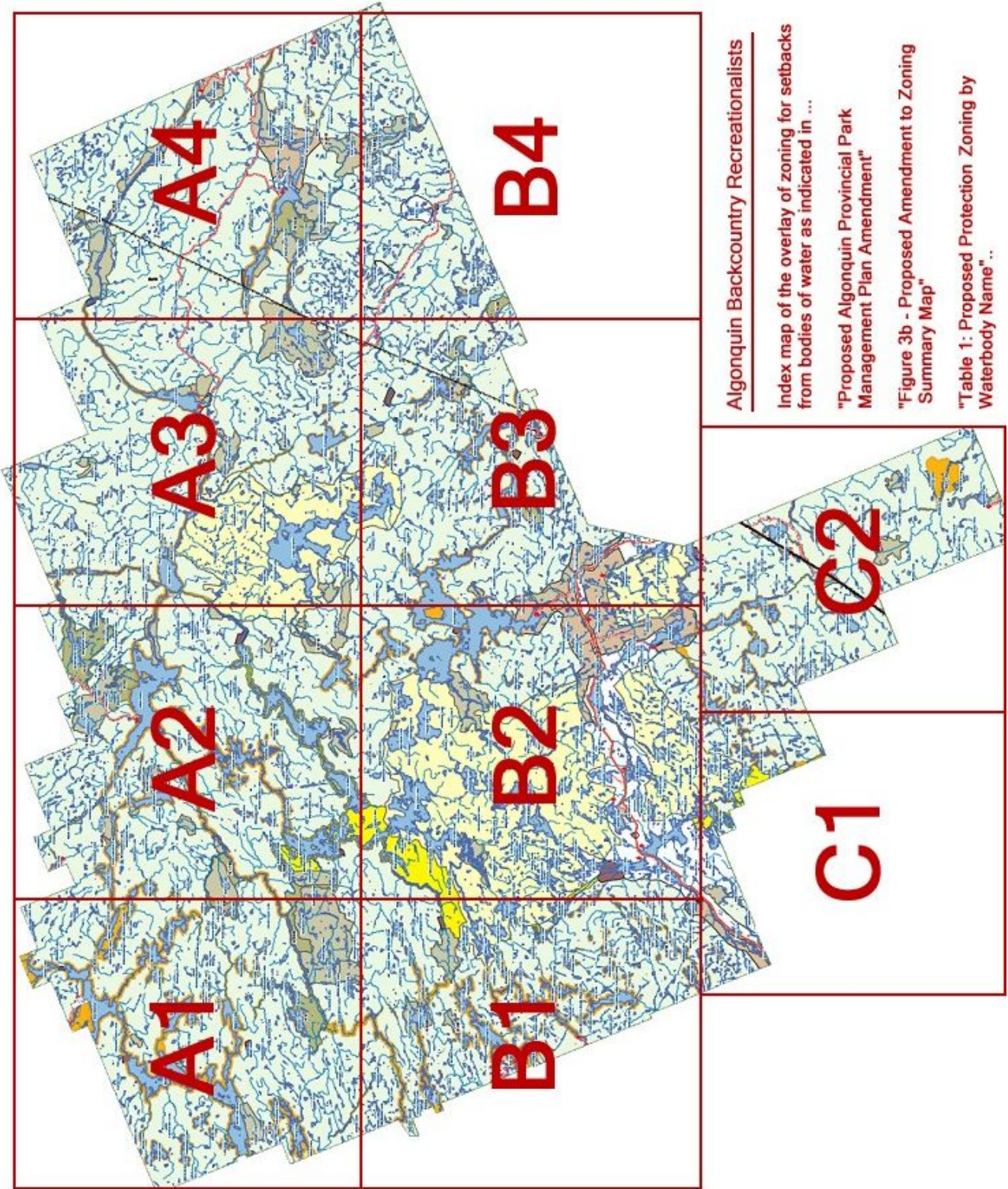
Concern 20: The ABR also has a concern that “Table 1: Proposed Protection Zoning by Waterbody Name, July 2012” should be finalized in a single alphabetical data-sort, thereby eliminating the difficulty of having to sequence through multiple internal alphabetical-listings.

NB: The index-map of the incorporated 10 sub-maps is located on the following end page.

Algonquin Backcountry Recreationalists (ABR) contact information ...

ABR Executive Committee
c/o Barry Bridgeford
113 Temperance Street
Aurora, Ontario
L4G 2R2

905-727-1764
bridgeford@abrweb.ca
www.ABRweb.ca



Algonquin Backcountry Recreationalists

Index map of the overlay of zoning for setbacks from bodies of water as indicated in ...

"Proposed Algonquin Provincial Park Management Plan Amendment"

"Figure 3b - Proposed Amendment to Zoning Summary Map"

"Table 1: Proposed Protection Zoning by Waterbody Name" ..